

# Stock analysis at your fingertips

Helping you understand the value of the companies you are investing in.

[Get Started](#)

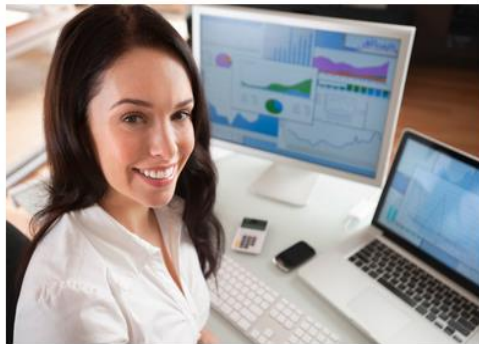
Understand the Value of the Companies you are Investing in

# Confidentiality

- All information contained in this document is presented in the strictest of confidence in the course of exploring business opportunities between the Disclosing (Stockcalc) and Receiving parties.
- "Confidential Information" shall include all information or material that has or could have commercial value or other utility in the business in which Stockcalc is engaged as well as all insight contained herein.

# What We Do

- Stockcalc is a Valuation Platform that provides
  - Daily Valuation & Reports on 7800 co's, 800 ETFs, 150 industries
  - Powerful Fundamental Valuation Modeling and Analytics
  - Real Time Valuation on every stock, ETF in your portfolio
  - Always Current List of Fundamentally Undervalued Stocks



[www.StockCalc.com](http://www.StockCalc.com)

# Valuation Tools - Overview

Stockcalc's Valuation Engine is built to Value any company using Fundamental Analysis: Incorporate the Reports, Models and Lists into your Financial Site or create a country specific site that can be marketed to Advisory, Funds and Retail.



- Value any/all of 7800 North American listed Companies
- Use the Detailed Reports for your sites Research Section
- Integrate the Valuation Screens
- Value a Portfolio of Companies
- Perform Sensitivity Analysis with the Valuation Tools

Our content adds more value for your clients

<https://www.stockcalc.com>

# Opportunities and Markets

- Stockcalc is developed for North American Markets.
  - Analysis ready for those looking at North American Markets
  - **CAN QUICKLY (3-6 mo's) BE CONFIGURED FOR NEW MARKETS**
- The platform is robust:
  - As a Retail investor platform
  - As Media Content (Reports, Valuations for National media)
  - For Enterprise Use – Hedge Funds, Brokerages
  - For Exchanges – Help companies with valuation to get listed
  - For Financial Advisors – Value all client holdings, look for undervalued stocks
  - For Financial Analysts – As a valuation platform

[www.StockCalc.com](http://www.StockCalc.com)

# Valuation Tools: Value any or all Companies

Enter Symbol, Automatically Run 1 Valuation  
or use the database of 7800 valued companies



The screenshot shows the StockCalc website interface. The top navigation bar includes the StockCalc logo, a 'Home' dropdown, 'What's New', a search bar with 'ICE:NYS', and a user greeting 'Welcome, Brian'. Below the navigation bar are three main sections:

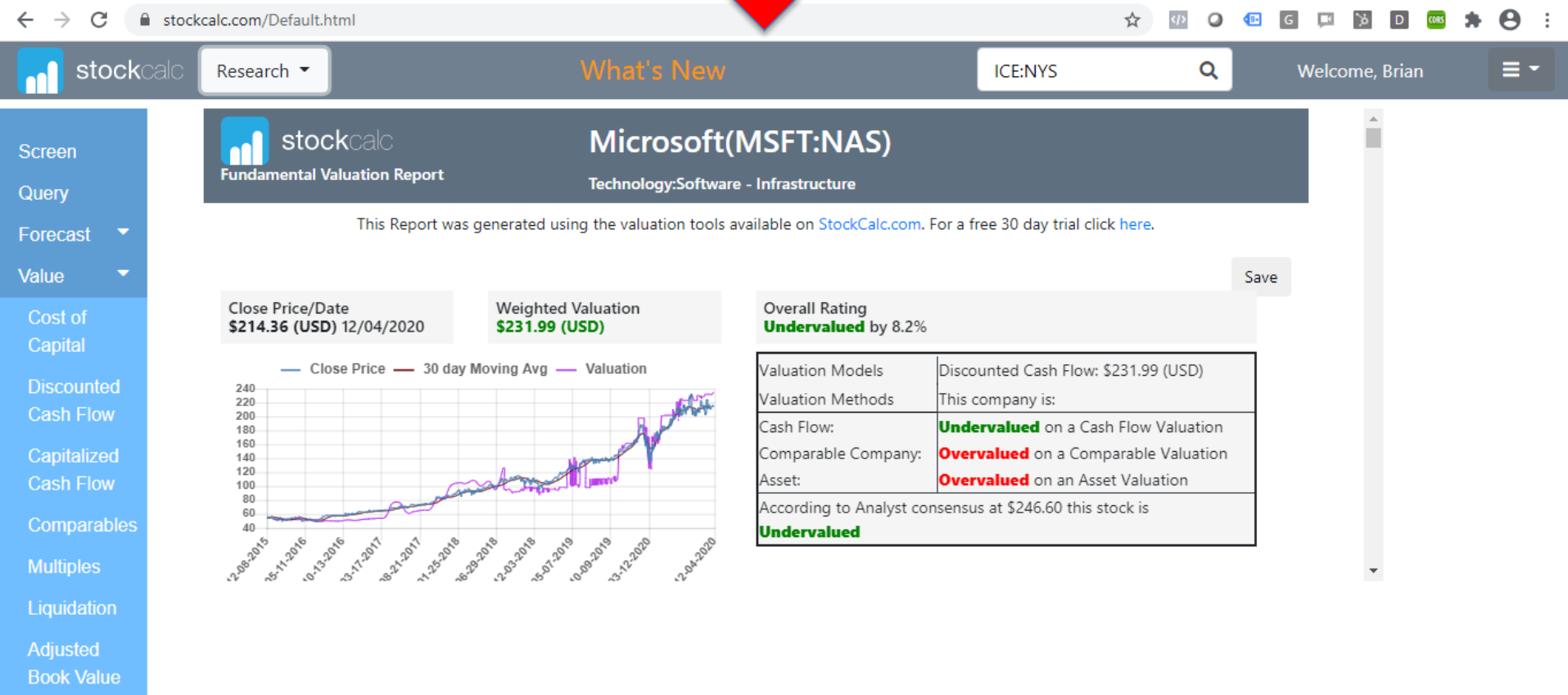
- Find Opportunities**: Quickly build your portfolio. Includes a 'SELECT A STOCK SCREEN' dropdown, 'Or you can' with a downward arrow, and buttons for 'Screen for Stocks' and 'View Undervalued Stocks'.
- Value a Company or ETF**: Backtest, Forecast, Value Companies. Shows 'MSFT:NAS' entered in the search bar, a result stating 'MSFT:NAS is **Undervalued** by 8.2%', 'Report is Ready' with a downward arrow, and a 'View MSFT:NAS Report' button.
- Value a Portfolio**: Value each Stock in a Portfolio. Shows a line chart for 'US Large Caps' from December to December. Below the chart is a table with columns 'Symbol', 'Price', and 'Value'.

Symbol	Price	Value
AAPL:NAS	122.25	120.50
AMZN:NAS	3162.58	3414.35
BNS:TSE	67.50	67.19
CSCO:NAS	44.20	44.00



# Valuation Tools: Valuation Reports - Stocks

Generate Detailed and Summary Valuation Reports  
and incorporate reports into your financial website



Copyright © StockCalc 2020 Patchell Brook Equity Analytics Inc. All rights reserved.

[Valuation Models Explained](#)

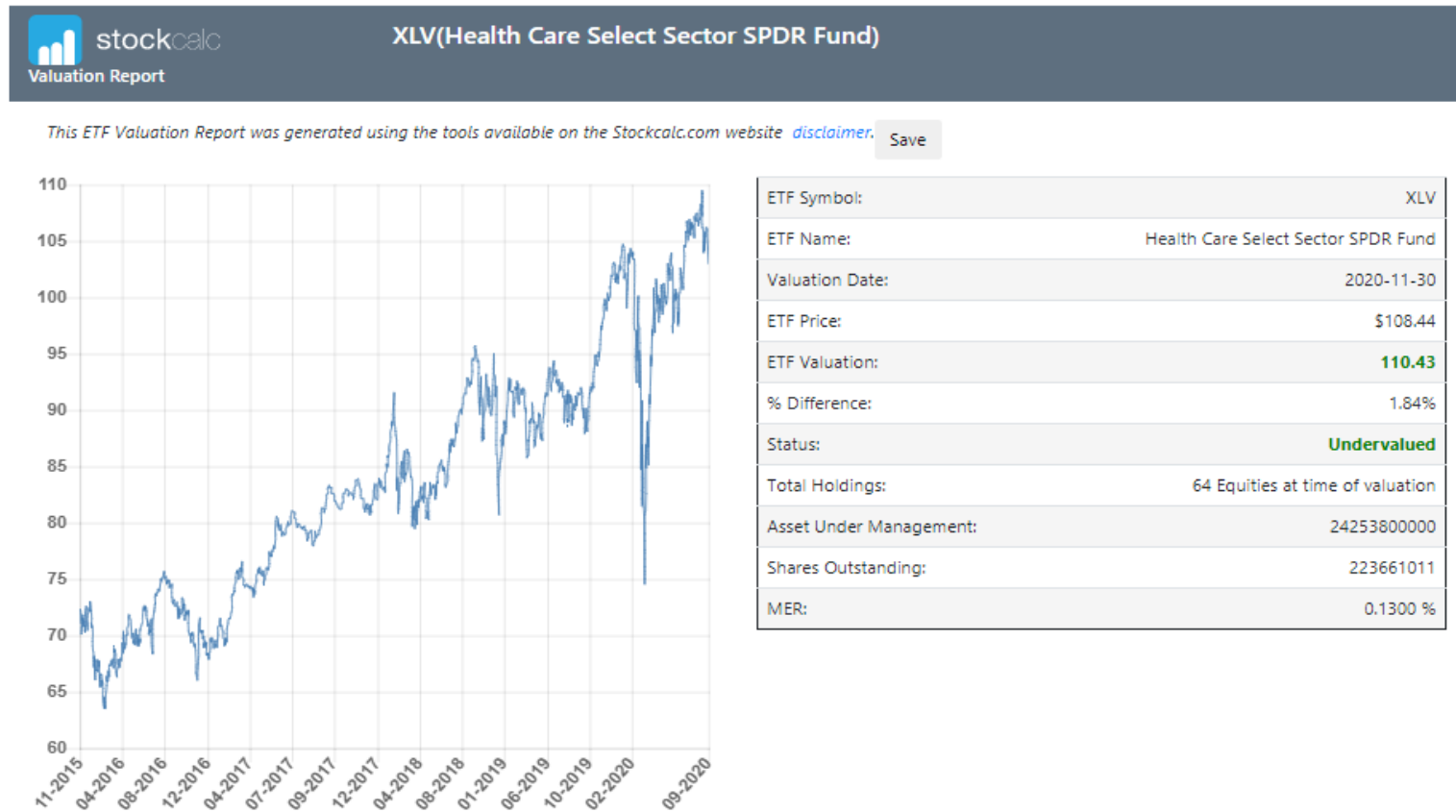
[Terms of Use](#)

# Valuation Tools: Valuation Reports – ETFs

ETFs



Generate Detailed and Summary Valuation Reports and incorporate reports into your financial website





# Valuation Tools: Screen for Valuation

Screen directly for Fundamental Valuation  
not implied valuation via PE or PB Ratios



Stock Screener

Sector

Industry

ETF

Top Picks

Undervalued

Dividend Stocks

Toggle Screen

Export to ▾

Symbol	ShortName	ExchangeId	ShortDescription	DilutedEPSGrowth	DividendYield	ClosePrice	Beta
AGR	Avangrid	NYS	An energy services holding company	56.097600	3.5700	49.020000	0.017433
CPX	Capital Power	TSE	Builds, owns and operates power plants	110.280400	5.7900	30.390000	0.616835
CU	Canadian Utilities	TSE	Provides diversified utility services	35.064900	4.4800	36.400000	0.317364
ETR	Entergy	NYS	An energy company	103.070200	3.8400	94.230000	0.387452
FTS	Fortis	NYS	A electric and gas utility holding company	12.121200	3.6200	36.820000	0.524604
GRP.U	Granite REIT	NYS	Owns and manages industrial properties	33.506400	4.6800	44.560000	0.708212
HE	Hawaiian Electric Indus	NYS	Generates and sells electric energy	21.710500	3.0200	41.410000	0.249072
MSM	MSC Industrial Direct Co	NYS	Markets & distributes MRO products and services	43.209900	3.1300	78.840000	0.954261

# Valuation Tools: Value a Portfolio of Stocks

Value all Stocks in a Portfolio using 5 Fundamental Models

Portfolio

Portfolio Valuation

Run your portfolio of companies and see the valuation results below

Run Portfolio Valuation

? Click here for help

Toggle Fullscreen

Legend

Undervalued

Overvalued

Fairly Valued

Excel

CSV

Symbol	Name	# Shares	Price Paid	Current Price	Overall Valuation	DCF Value	Price Comps	Other Comps	Multiples	Adjusted Book	Analyst Value
A:NYS	Agilent Technologies	0	NaN	115.15	116.68	59.02	93.70	131.67	72.60	68.21	132.00
AAL:NAS	American Airlines Group	0	NaN	16.40	17.10	67.59	26.41	17.10	61.74	-	14.25
AAP:NYS	Advance Auto Parts	0	NaN	152.47	160.05	205.62	150.48	197.96	174.40	191.32	187.33
AAPL:NAS	Apple	0	NaN	122.25	120.50	65.87	83.82	159.71	49.56	25.58	120.50
ABBV:NYS	AbbVie	0	NaN	107.28	108.34	265.45	88.32	157.11	124.64	218.63	116.25
ABC:NYS	AmerisourceBergen	0	NaN	102.98	109.93	311.05	81.25	113.99	103.83	-	117.50

Copyright © StockCalc 2020 Patchell Brook Equity Analytics Inc. All rights reserved.

[Valuation Models Explained](#)

[Terms of Use](#)

# Analyze Discounted Cash Flow

Advanced

Sensitivity Analysis

Quick



## Advanced Discounted Cash Flow

### Microsoft

Company: MSFT:NAS

Retrieve DCF:



Forecasts:



Save DCF:

Save

Current Price: \$ 200.59 USD

\*\*\* Patchell Brook Equity Analytics Inc. accepts no liability whatsoever for any loss or damage, or otherwise, arising from the use of any section of this website. \*\*\*

Calculated Price: \$ 232.96 USD

## Results

Recalculate DCF

Year	2021	2022	2023	Terminal Growth Rate(%) 1.5
EBITDA (Cash Flow)	72448600000	81218200000	95321500000	96751322500
Normalizations & Adjustments	0	0	0	0
Normalized EBITDA	72448600000	81218200000	95321500000	96751322500
Tax Rate(%) 16.5000	11954019000.00	13401003000.00	15728047500.00	15963968212.50
+/- Tax Loss Carry Forward	0	0	0	0

# Value Stocks Comparatively

stockcalc.com/Default.html

stockcalc Research What's New MSFT:NAS Welcome, Brian

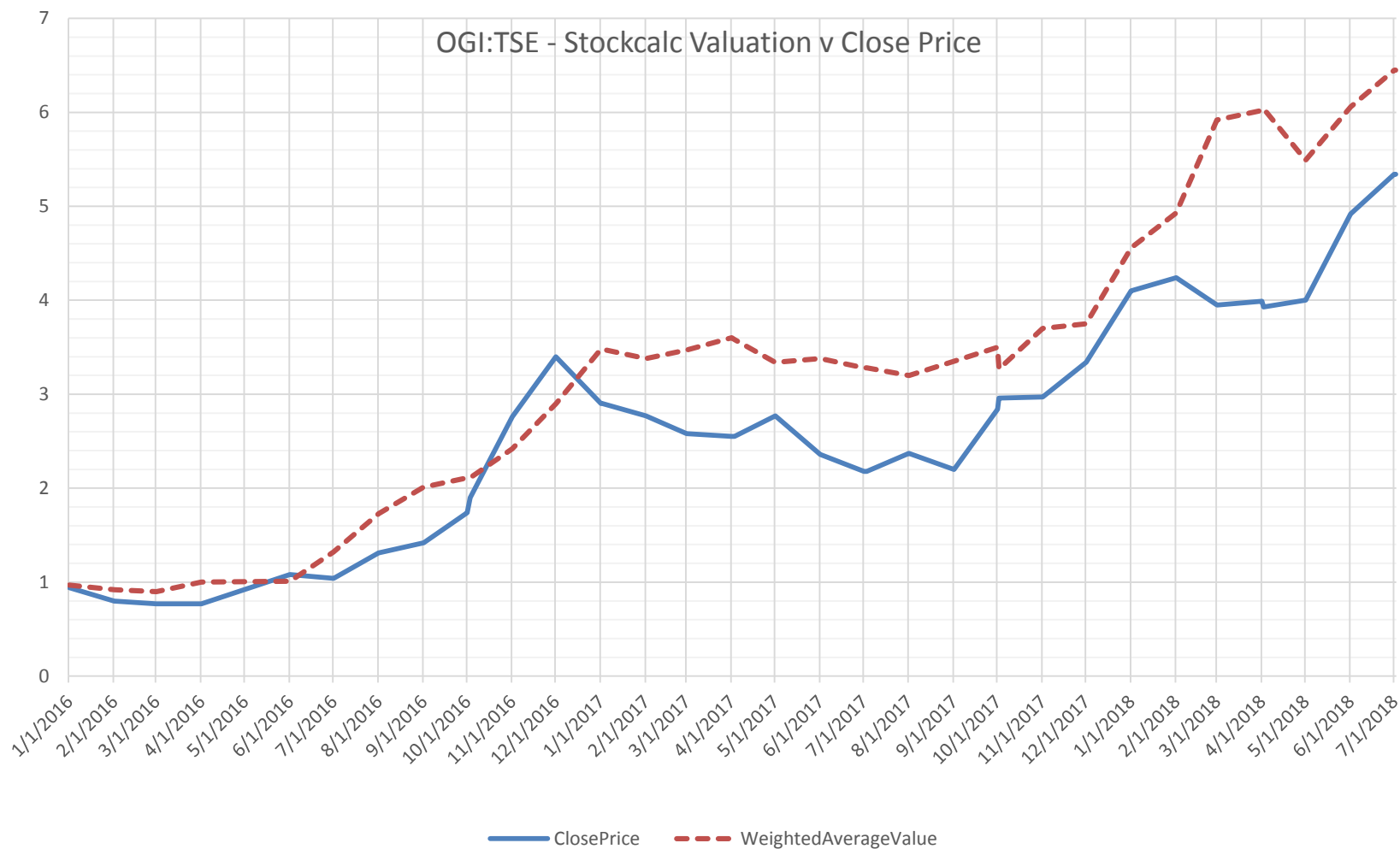
Screen Query Forecast Value Cost of Capital Discounted Cash Flow Capitalized Cash Flow Comparables Multiples Liquidation Adjusted Book Value Report

Company MSFT:NAS	End Date Value	Price Based on Comps	Adjustment Factor (%)
Earnings/Share	5.76	190.82	-57.1
Book Value/Share	15.63	203.05	1.2
Sales/Share	18.61	146.71	-3.3
Cash Flow/Share	7.90	166.29	-30.6
EBITDA/Share	8.91	185.92	-35.5

MSFT:NAS	Ratios Used	Average Values	AAPL:NAS	GOOGL:NAS	FB:NAS
36.52	PE Ratio	33.13	35.12	32.25	32.02
13.45	PB Ratio	12.99	27.40	4.81	6.76
11.30	PS Ratio	7.88	7.50	6.12	10.03
26.63	PCF Ratio	22.23	25.67	18.36	22.65
22.30	EV to EBITDA	20.88	24.13	18.51	19.99

# See Valuation over Time:

Stockcalc's Valuation versus the Stocks Close price over time (OGI:TSE)



# Valuation Tools: Analyst Language

Use the Query Language and API we have Developed to Push Stockcalc to You



Analyst Language Interpreter

```
clear;
clear;
A = Spinoﬀ;
A = Spinoﬀ;
A.size;
A.size;
A.show;
A.show;
v_avgNS = A[*,Numberofshares:avg];
v_avgNS = A[*,Numberofshares:avg];
v_avgNS;
v_avgNS;
tables;
tables;
```

columns: 6 rows: 368

```
1: Label: Symbol, Type: varchar 2: Label: ExchangeId, Type: varchar 3: Label: ExDate, Type:
date 4: Label: ChildSecurityId, Type: char 5: Label: NumberOfShares, Type: decimal 6: Label:
AdjustmentFactor, Type: decimal
0.455845
S AlphaBeta
S AnalystDowngrades
S AnalystUpgrades
S AnalystUpgradesDowngrades
S BalanceSheetAnnual
S BalanceSheetQuarterly
S BenchmarkReference
S Bottom25YTD
S CashDividend
S CashFlowStatementAnnual
S CashFlowStatementQuarterly
S CommodityPrice
S CommodityReference
S CompanyReference
S ConsensusEstimates
```

```
1 /*
2  * Welcome to the AL code editor.
3  */
4 program
5 {
6     println('Hello to all Analyst Language users in the world!');
7 }
8
```

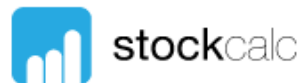
cleared

```
2
1
1
1
1
1
1
```



# Valuation Tools: API

← → ↻ 🔒 https://www.stockcalc.com/analystapi.aspx ☆ </> 🔍



Patchell Brook's StockCalc website boasts a powerful interface for partners & power users that can be used to access various features remotely or automatically from a programming tool of choice.

[API specifications](#)

[Download API specifications](#)

In this tutorial, we will familiarize the reader with API concepts & tools that can help achieve desired results & even program additional functionality. We will also explore the sand box & Software Development Kit which can be used to write software that can be used for various analytical purposes.

[API tutorial](#)

[Download offline API tutorial](#)

[Sample Code](#)

## StockCalc API SandBox

WAV: Weighted Average Valuation ▼

Calculates the StockCalc Weighted Average Valuation for a provided company/companies identified by a symbol & exchange.

AsOfDate  ?

Symbol  ?

# Summary

- Stockcalc is a Valuation Platform that provides
  - Powerful fundamental valuation tools and data access
  - Detailed Valuation Reports on 7800 co's daily in North American markets
  - Valuation on every stock, ETF in your portfolio
  - Third Party integration with different custodians
  - Underlying Analyst Query Language ©
  - Site is flexible – API's, JSON reports, database access

[www.StockCalc.com](http://www.StockCalc.com)

